

ORBOST HISTORICAL SOCIETY INC.



P.O. BOX 284 ORBOST VIC 3888

President: Beryl Macalister
Vice President: Geoff Stevenson
Secretary: Paul Dawson
Treasurer: Paul Dawson
Museum Curators: Geoff Stevenson
Eddie Slatter
Research Secretary: John Phillips

NEWSLETTER

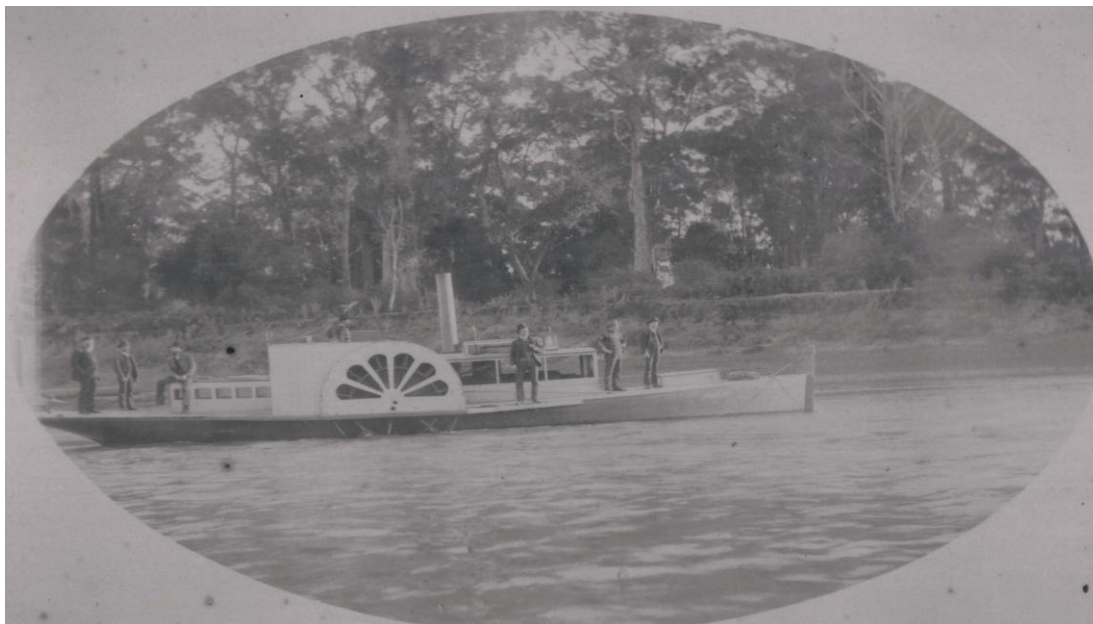
APRIL, 2004

P S CURLIP

The *Curlip*, a wooden paddle-steamer of 9 tons gross and dimensions of 43 feet long, 10 feet wide and a depth of 3 feet, was built by Samuel Richardson & Sons, on the slipway at their Tabarra sawmill in 1890. It was powered by a two horse power horizontal high-pressure steam engine, built by Laird & Son of Ballarat. The *Curlip* was initially owned by Samuel Richardson and by 1905 had passed to Harry James and partners. In 1919, it was owned by the Orbost Shipping Co. and registered in Melbourne.

The *Curlip* was used mainly for tug work, towing barges and small vessels along the Snowy River and across the bar at Marlo. At weekends and during holiday times it was used to convey picnic parties along the river. On 3rd March 1919, there was serious flooding along the Snowy River, and the *Curlip* was torn from its moorings and swept down and out the mouth of the Snowy River. It was then washed up onto the beach to the west of the entrance and became a total wreck. Everything of value was stripped from the vessel and it disappeared beneath the sands of the beach.

References: *Shipwrecks on the East Gippsland Coast*, Don Love, 2003; *Story of Gippsland Shipping*, J. C. Bull & Peter Williams, 1967.





The *Curlip* at the Orbost Landing



The *Curlip* Towing Boats of Picnickers near Marlo